



- Exact weight program
- 28-day shelf life (20 for grinds)
- Leak-proof packaging
- Minimizes shrink and waste

USDA Prime

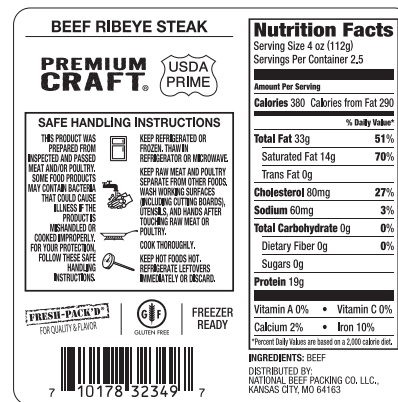
Today, USDA Prime is widely recognized and sought after by shoppers. The National Beef® vacuum-sealed packaging program is a great way to add the highest quality beef to your meat case while generating sales. Whether you want to carry one item or five, we have a variety of options to suit your needs.

| NBP CODE | DESCRIPTION | UNIT WT. | UNITS/BOX | POUNDS/BOX | TIE x HIGH | IMAGE |
|----------|-----------------------------|----------|-----------|------------|------------|-------|
| 32349 | Beef Ribeye Steak | 10 oz. | 8 | 5 | 9 x 10 | |
| 38309 | Beef Strip Steak | 10 oz. | 8 | 5 | 9 x 10 | |
| 36539 | Beef Tenderloin Filet Steak | 7 oz. | 8 | 3.5 | 9 x 10 | |
| 35499 | Beef Top Sirloin Steak | 8 oz. | 8 | 4 | 9 x 10 | |
| 31079 | Ground Beef Chuck | 16 oz. | 12 | 12 | 9 x 10 | |

Retail Label



Front



Back

For additional product information, call your National Beef® representative at 1-800-449-BEEF.



America's Premier Beef Company®

Kansas City, MO 64163 • nationalbeef.com • 1-800-449-BEEF